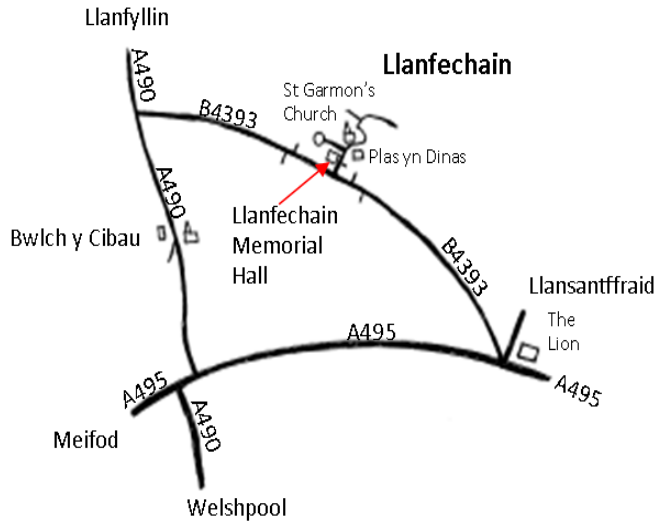


How to Find Us



Directions

From Llanfantffraid:

1. Head northeast on A495 toward B4393
2. Turn right onto B4393 (signposted to Lake Vyrnwy)
3. Keep on B4393 for approximately 2.5 miles, Turn right (signposted Llanfechain), destination is on the left

From Llanfyllin:

1. Head southeast heading out of Llanfyllin
2. Turn left onto the B4393, keep on B4393 for approximately 2.5 miles.
3. Turn left into Llanfechain, destination is on the left.

From Meifod:

1. Head west towards Llanfantffraid on A495
2. Turn left onto A490 through Bwlch y Cibau
3. Turn right onto B4393
4. Turn left, destination is on the left

Llanfechain Memorial Hall
Llanfechain, Powys, SY22 6UQ

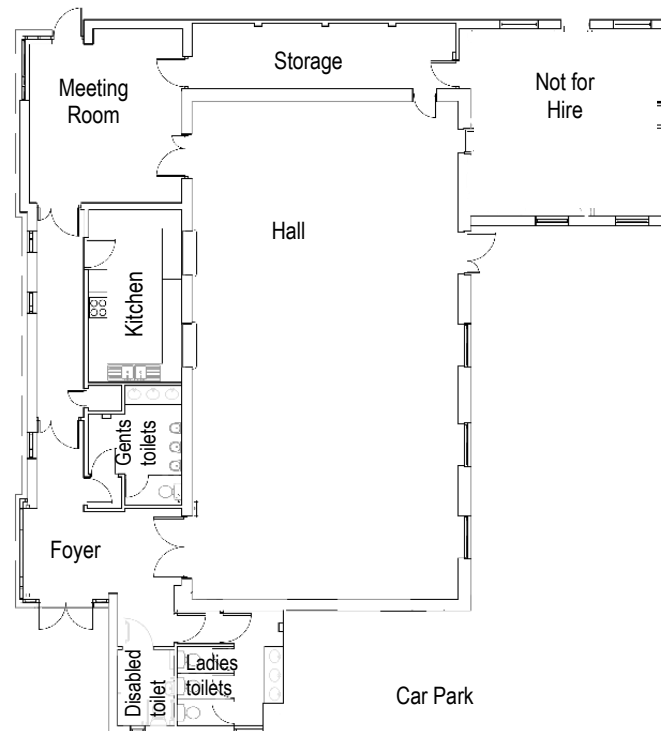
Booking Enquiries

Contact

Mr Ron North,
26 Maes Mechain,
Powys, SY22 6UH
Tel: 01691 828802
E-mail: ronald.north@btinternet.com

Charges

Please contact the Booking Officer (contact details above) for list of charges



Llanfechain Memorial Hall



The Ideal Location for your Event

Completed in December 2009, Llanfechain Memorial Hall offers first class amenities in an area of outstanding beauty .

Llanfechain Memorial Hall features a main hall with facilities for a social, training or commercial event.

If something smaller is required then we have a smaller room available for meetings.

Whatever your function, Llanfechain Memorial Hall is the ideal venue. Contact the booking manager for price and availability.

Llanfechain Village

Llanfechain means 'church of the valley of the Cain' and is a small, beautiful village located in northern Powys, mid-Wales, between Llanfyllin and Llanfantffraid. It has a population of approximately 600 people.

Features include a lovely old stone church, the local pub, Plas-yn-dinas, a community shop and a small primary school. The village holds a traditional village show on August bank holiday weekend which has taken place since 1966.

Llanfechain was the birthplace of Walter Davies, who undertook printed surveys of the rural economy and society of Wales at the turn of the 19th century

Llanfechain Memorial Hall
Llanfechain, Powys, SY22 6UQ

April 2013

Llanfechain Memorial Hall the ideal location for:

- ✓ Wedding receptions
- ✓ Parties
- ✓ Club meetings
- ✓ Musical and drama productions
- ✓ Conferences, seminars & exhibitions
- ✓ Training
- ✓ Exercise classes / indoor sports

The hall has recently been extended and renovated and offers high standard accommodation and facilities.

Hall



The hall has a high quality wooden floor and works well for all occasions.



Facilities

KITCHEN

- Blue Seal Turbofan 31 cooker with 4 ring hobs.
- Lincat plumbed in water heater for drinks
- Commercial dishwasher
- 2 under counter fridges
- Small microwave
- 2 sinks with hot & cold water
- 1 sink for hand washing only
- 2 serving hatches to the hall

BROADBAND CONNECTION

Wireless connection available.

STAGING

Portable staging and steps to staging are available and can be set up as per hirers requirements.

HALL LIGHTING

The hall lighting is highly flexible. It is easy to use and offers a wide variety of lighting moods and levels.

HEARING LOOP

A hearing loop facility is available within the Main Hall. It is always switched on and will boost the sound within the hall through a microphone.

TABLES AND CHAIRS

There are large circular and large rectangular tables available—please note that hirer will need to bring their own table coverings. Chairs have recently been replaced featuring a soft padded seat and an attractive fan-back design. There are also a small number of chairs with arm rests to aid those who have difficulties with sitting.

Kitchen



TOILETS

- Disabled toilet
- 3 Gents and 3 ladies toilets

ACCESS

The building and every room within is fully accessible for people in wheelchairs

CAR PARK

The car park adjacent to the hall has 2 bays made available for vehicles displaying blue disabled badges. There are an additional 6 spaces on this car park with a larger community car park also available for people using the hall, this is located on the opposite side of the road from the hall entrance and has 29 spaces available.

Local amenities

Plas Yn Dinas 01691 828380. 16th Century timbered building that was originally a Court House. Tel: 01691 828380 Web: www.robertsbars.co.uk

St Garmon's Church

The parish church, St Garmon's, was originally constructed in Norman times, and still retains many original features. Centred in a circular churchyard with the village road and houses curved around it, and at the lower end of the village, the river Cain flowing under a stone bridge.

Llanfechain Community Shop Ltd

Open Monday to Friday 8am to 5pm and Saturday and Sunday 8am to 12.30pm. The shop was opened in June 2010 and is managed and run entirely by volunteers.

Post Office

Open Thursdays only within Llanfechain Community Shop.

Meeting Room

